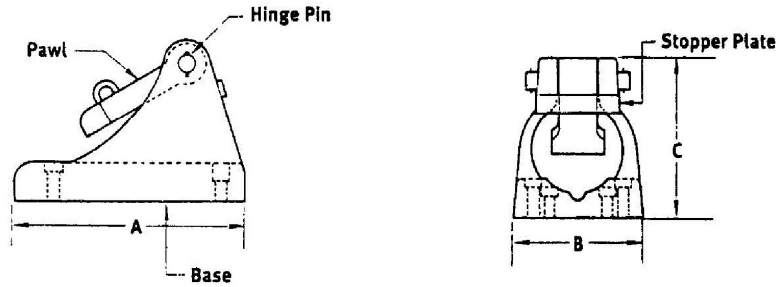


ULSTER (PAWL) TYPE CHAIN STOPPER

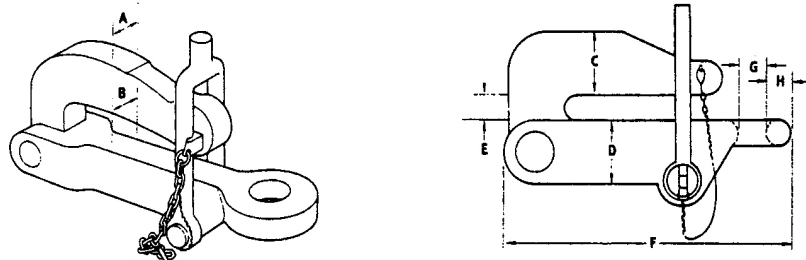


All dimensions in inches and pounds unless otherwise indicated.

CHAIN SIZE	A	B	C	WEIGHT
1 - 1-1/2	20	11	13-1/2	230
1.9/16 - 1.7/8	25	14-1/4	16-1/8	450
1.15/16 - 2.3/16	30	18-1/8	22	990
2.1/4 - 2.1/2	39	21-1/2	27-3/8	1,770
2.9/16 - 2.13/16	42-7/8	24-3/4	30-1/2	3,210
2.7/8 - 3.3/16	53-1/2	29-5/8	36-1/2	3,540
3.1/4 - 3.7/16	56	31	39	3,760
3.1/2 - 3.7/8	62-1/2	34-5/8	43-1/8	4,000
3.15/16 - 4.1/4	70-3/4	39-1/4	49	10,200

Approximate dimensions shown above. Contact us for specific dimensions, as they may differ between manufacturers.

PELICAN HOOK CHAIN STOPPER



All dimensions in inches and pounds unless otherwise indicated.

CHAIN SIZE	A	B	C	D	E	F	G	H	Test Lbs.	Prod. Weight Lbs.
3/4 HS & 3/4	7/8	7/8	2	2	1	10	1-1/4	3/4	34,000	12
7/8 HS & 7/8	1	1-1/8	2-1/4	2-1/4	1-7/32	12-11/16	1-3/8	7/8	46,000	16
1 HS & 1, 1.1/4	1-1/4	1-1/4	2-3/4	2-1/2	1-17/32	16-11/16	1-5/8	1-1/8	92,200	32
1.1/4 HS - 1.5/8	1-1/2	1-1/2	3-1/4	3	2	18-7/16	1-7/8	1-1/2	153,000	53
1.5/8 HS - 2	1-3/4	1-3/4	3-1/2	3-3/8	2-7/16	21-1/4	2-1/8	1-1/2	192,000	77
2.1/8, 2.1/4, 2.3/8	2-1/4	2-1/4	4-1/4	4-1/8	2-9/16	25-9/16	2-1/4	1-1/2	270,000	151
2.1/2 - 2.3/4 HD	2-1/2	2-1/2	4-5/8	4-1/2	3-1/8	29-1/2	2-3/4	1-7/8	290,000	195
3 HD, 3, 3.1/4	2-3/4	2-3/4	5-1/8	5	3-3/8	32-1/2	3	2	300,000	263
3.3/8 - 3.1/2	3	3	5-1/2	5-1/2	3-7/8	35-3/16	3-3/8	2-1/2	350,000	265
3.1/2 HD & 3.3/4	3-1/2	3-1/2	6	6	4-1/2	37-3/4	4-1/4	2-7/8	400,000	285
4-3/4	3-1/2	3-1/2	6	6	5-3/8	46-3/8	4-1/4	2-7/8	450,000	350

Approximate dimensions shown above. Contact us for specific dimensions, as they may differ between manufacturers.