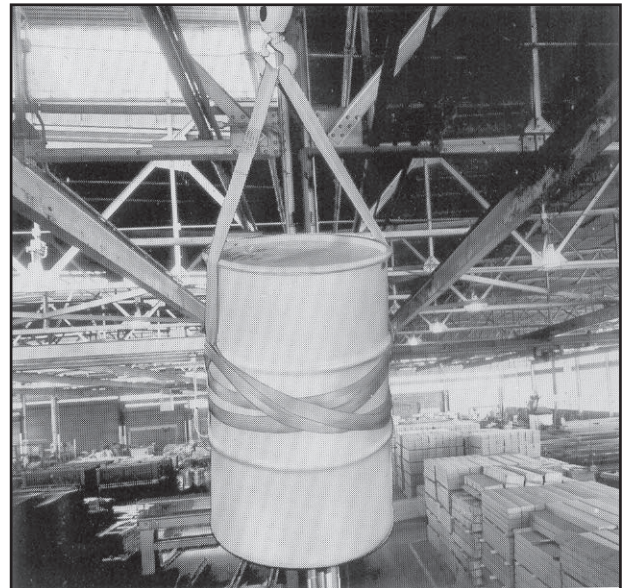
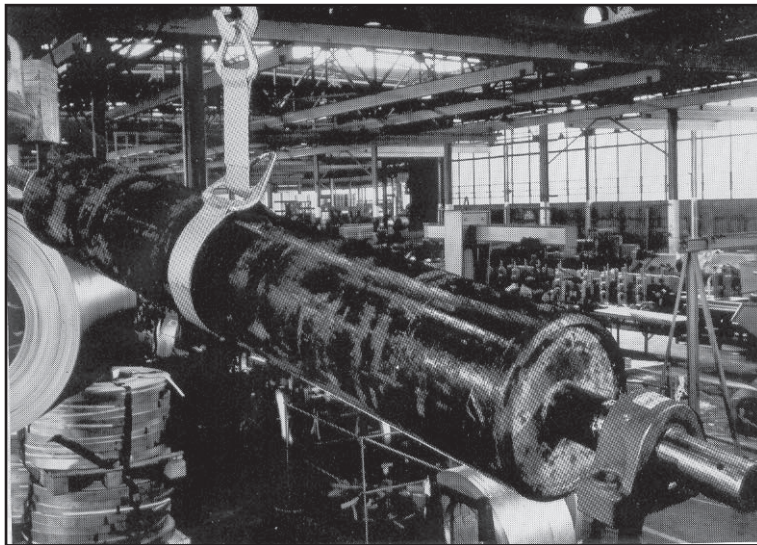


Synthetic Web Slings . . .

designed, manufactured and serviced exclusively by DCL . . . lifting specialists to industry for over 50 years!

Whatever your lifting requirements may be . . . large, heavy equipment; delicate electronic components; extremely fragile materials; highly finished parts; unusually shaped and unbalanced parts . . . all these proven applications and many more can be safely and economically handled with DCL Webbing Slings.



features

LIGHTWEIGHT - Nylon and Polyester webbing slings are lighter, less bulky and much more convenient to handle than conventional wire rope, chain, wire mesh or manila rope slings of comparable capacity. The most delicate or highly polished surfaces can be handled without danger of being marred or scratched.

SAFE - Manufactured from 100% nylon or polyester webbing, DCL slings possess a safety factor of 5. Every sling is identified with a permanent sewn tag indicating working load limit, type of material and the DCL name.

⚠ WARNING	
<ul style="list-style-type: none"> •Can Fail if Damaged, Misused, or Overloaded •Inspect Before Each Use •Use Only if Trained •Observe Rated Capacities •Avoid Sharp Edges, Exposure to Acids, Alkalines and Temperatures Over 180° Degrees F. •DEATH OR INJURY CAN OCCUR FROM IMPROPER USE OR MAINTENANCE 	

Part No: 9DI-EE
 Serial 000000-0-1
 No: 
 Width: 2 IN
 Lgth: 00 FT
504-944-3366

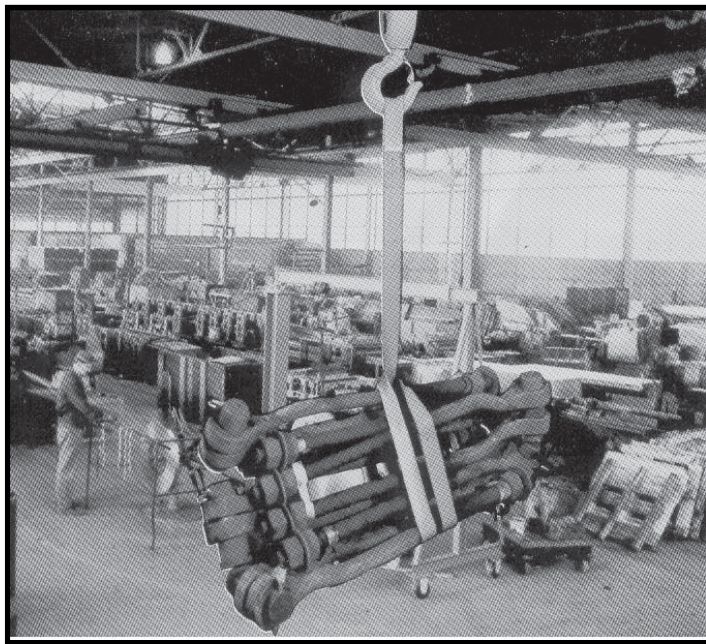
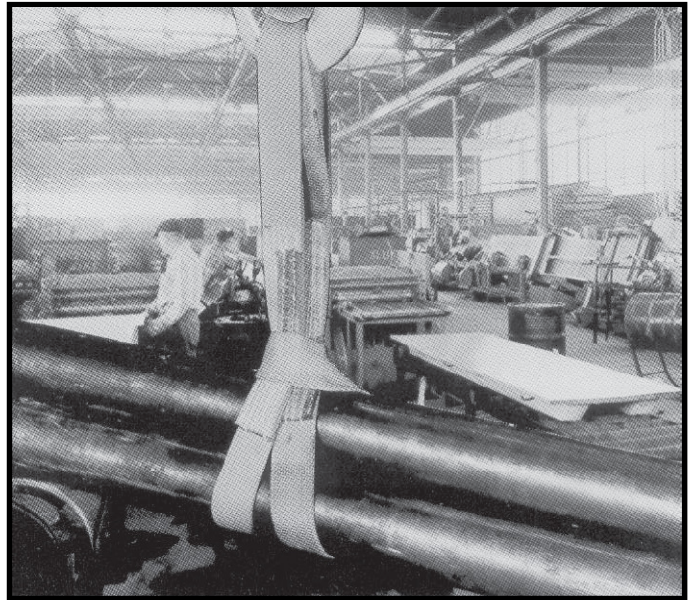
RATED CAPACITIES		
⌋	6200 LBS	VERTICAL
⌋	4960 LBS	CHOKER
⌋	12400 LBS	V. BASKET
NYLON		03/20/09

Usage of Nylon Web Slings

NON-DECAYING – Synthetic slings are highly resistant to rot, mildew and aging. They can be readily used in wet or even salt water applications.

SHOCK ABSORBING – DCL webbing slings have a factor of elasticity of up to 20% allowing them to absorb heavy shock thereby cushioning a load rather than subjecting it to sudden jamming.

QUALITY MATERIAL – Only the finest grade webbing is used in the manufacturing of DCL slings. They are highly resistant to abrasion, lubricants, chemicals and are substantially inert to alkalis. See chart on next page listing chemical resistance characteristics of DCL slings.



CERTIFIED SLINGS – DCL will individually proof-test web slings/assemblies if requested by the customer. Proof tests are commonly performed pulling the assembly to twice the designed Rated Capacity in a straight pull. DCL can accommodate other than 2:1 proof-test load test requirements as requested. In such cases, a Proof-Test-Certificate is issued to attest to the fact that the web sling/assembly was proof-tested to a stated load. In cases where a Proof-Test is not requested by the customer, DCL can issue a Certificate of Compliance that states the construction of the web sling/assembly conforms to applicable construction standards and meets rated capacities stated but excludes an actual proof-test conducted on the product.

