

Return Eye Type Slings

RETURN EYE TYPE (FLAT EYE TYPE OR REVERSED EYE)

Return eye design reduces abrasion when pulling sling from under loads. This type of construction increases sling life.

TYPE VI EYE WIDTH IS 1/2 OF SLING WIDTH



MEDIUM DUTY
SINGLE PLY BODY
WEAR STRIP
ONE SIDE
FULL LENGTH

HEAVY DUTY
DOUBLE THICK
WEAR STRIP
ONE SIDE
FULL LENGTH



WIDTH INCHES	NUMBER PLYS	EYE SIZE	RATED CAPACITY (LBS)			CODE NUMBER
			CHOKER	VERTICAL	BASKET	
2	1	9	1920	2400	4800	6B-FE
2	2	9	3840	4800	9600	6DB-FE
2	1	9	2560	3200	6400	9B-FE
2	2	9	5120	6400	12800	9DB-FE
4	1	12	3840	4800	9600	6I-FE
4	2	12	7680	9600	19200	6DI-FE
4	1	12	5120	6400	12800	9I-FE
4	2	12	10240	12800	25600	9DI-FE
6	1	18	5760	7200	14400	6M-FE
6	2	18	10650	13320	26640	6DM-FE
6	1	18	7680	9600	19200	9M-FE
6	2	18	14200	17760	35520	9DM-FE
8	1	20	10240	12800	25600	9P-FE
8	2	20	18430	23040	46080	9DP-FE
10	1	22	12800	16000	32000	9S-FE
10	2	22	22400	28000	56000	9DS-FE
12	1	24	15360	19200	38400	9V-FE
12	2	24	26110	32640	65280	9DV-FE

SPECIAL SERVICES

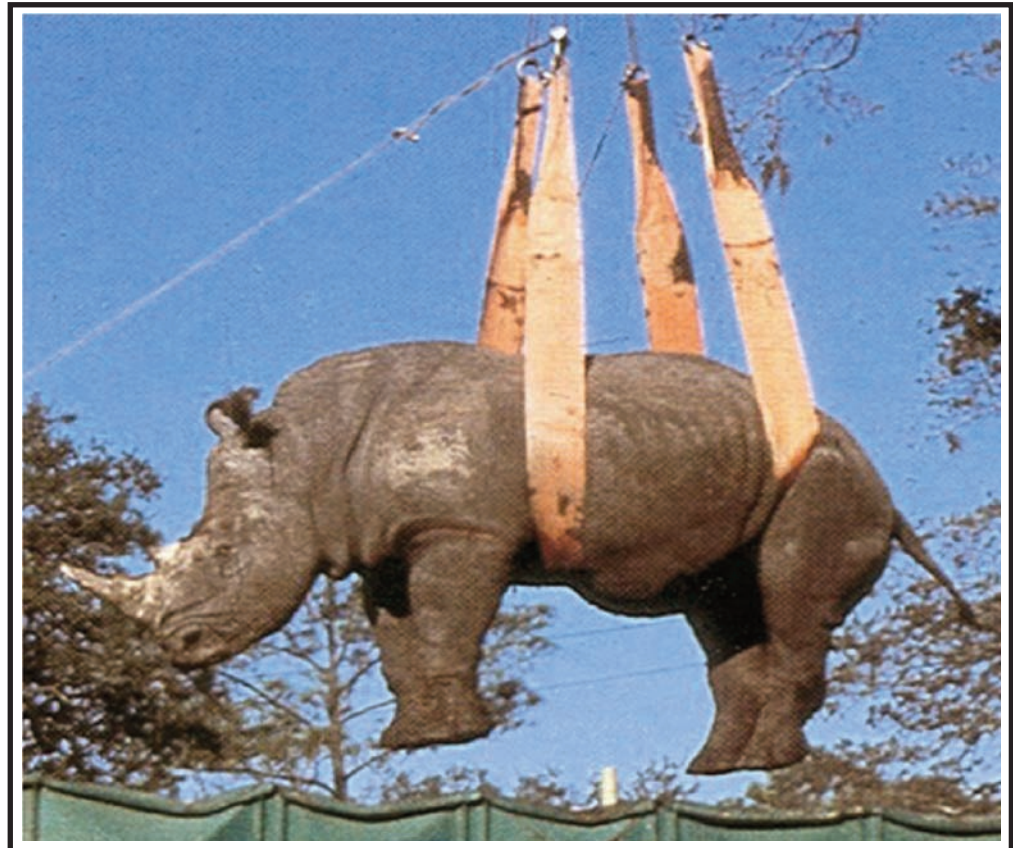
Send us your problems. Use DCL's experience to solve your problem lift. We design and manufacture slings for many special applications.

WHITE RHINO RELOCATION

Lifting four 2-1/2 ton white rhino into the air by crane is a formidable task. Two 6-inch straps were placed securely under the first rhino's belly to prevent her from falling onto her side.

Harriot was gingerly lifted into the air by crane operator and owner Bill Bassett from the American Crane Rentals. After Harriot's landing, three other rhino's "flew through the air with the greatest of ease."

The four rhinos reside at the Audubon Zoological Gardens - New Orleans



WARNING

- Sling's rated capacity is based on new sling only.
- Do not exceed working rated capacity.
- Keep away from heat and sharp edges, use corner protectors.
- Meets or exceeds OSHA & ASME B30.9C Standards.

