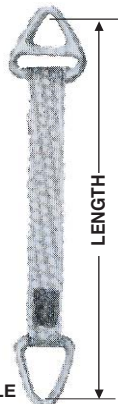
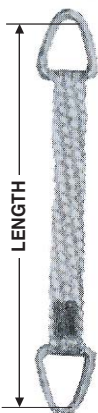


Nylon Webbing Slings

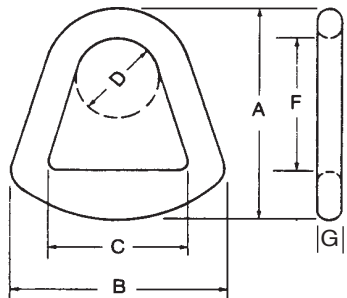
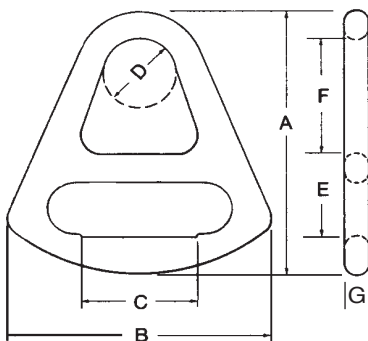
WITH FORGED ALUMINUM END FITTINGS

Designed for use on basket slings or combination basket and choker slings. Aluminum is lightweight, strong and non-sparking. Can be used safely under most conditions.

TYPE I
BASKET SLING
TRIANGLE BOTH ENDS



TYPE II
BASKET OR CHOKER
SLING TRIANGLE ONE
END CHOKER TRIANGLE
OTHER END



WIDTH INCHES	NUMBER PLIES	RATED CAPACITY (LBS)			CODE NUMBER
		CHOKER	VERTICAL	BASKET	
2	1	1920	2400	4800	6I-ATC
2	1	2560	3200	6400	9I-ATC
3	1	2880	3600	7200	6M-ATC
3	1	3840	4800	9600	9M-ATC
4	1	3840	4800	9600	6P-ATC
4	1	5120	6400	12800	9P-ATC
6	1	5760	7200	14400	6V-ATC
6	1	7680	9600	19200	9V-ATC
2	1		2400	4800	6I-ATT
2	1		3200	6400	9I-ATT
3	1		3600	7200	6M-ATT
3	1		4800	9600	9M-ATT
4	1		4800	9600	6P-ATT
4	1		6400	12800	9P-ATT
6	1		7200	14400	6V-ATT
6	1		9600	19200	9V-ATT

Aluminum and Steel Chokers and Triangles

WEB WIDTH INCHES	ALUMINUM TRIANGLES							WT.	CAP
	A	B	C	D	E	F	G		
2	4	3 5/8	2 1/4	1 3/4	15/16	2 3/8	9/16	.31	3360
3	5 1/4	5	3 1/4	2	1 3/16	3 5/16	5/8	.75	5000
4	6 1/4	6 5/8	4 3/8	2 3/8	1 7/16	4	11/16	1.1	6700
6	8 5/16	8 7/8	6 3/8	3 1/8	1 3/4	5 1/2	15/16	2.7	9700

WEB WIDTH INCHES	ALUMINUM CHOKERS							WT.	CAP
	A	B	C	D	E	F	G		
2	6 1/8	5 1/4	2 1/8	1 3/4	15/16	2 3/8	9/16	.73	3360
3	7 1/2	7 1/8	3 1/8	2	1 1/8	3 5/16	5/8	1.3	5000
4	8 3/4	8 3/4	4 1/8	2 3/8	1 7/16	4	11/16	1.9	6700
6	11 5/16	11 3/4	6 1/8	3 1/8	1 3/4	5 1/2	15/16	5.1	9700

WEB WIDTH INCHES	STEEL CHOKERS							WT.	CAP
	A	B	C	D	E	F	G		
2	6	5 1/2	2 1/8	2	1 1/16	2 1/4	1/2	2 LB.	6,600
3	7 1/2	7	3 1/8	2	1 3/16	3 3/16	1/2	2.9 LB.	8,900
4	9 5/16	9 9/16	4 1/8	2 1/2	1 13/16	3 1/2	1/2	6 LB.	11,600
6	12	12 3/4	6 1/8	2 7/8	2 11/16	4 9/16	1/2	9.8 LB.	16,800
8	14 7/16	16 1/2	8 1/8	5	2 13/16	6 7/16	3/4	24 LB.	22,400
10	16 1/2	18 3/4	10 1/4	5 1/8	3 1/2	7 5/8	3/4	28 LB.	28,000
12	19 1/4	22 5/8	12 1/8	5 1/2	4 1/4	9 3/4	3/4	40 LB.	32,000

WEB WIDTH INCHES	STEEL TRIANGLES							WT.	CAP
	A	B	C	D	E	F	G		
2	2 7/8	3 3/4	2 1/8	1 3/4	1	2 5/16	1/2	1 LB.	6,600
3	5 3/16	5	3 1/16	2	1 1/4	3 5/16	1/2	1.6 LB.	8,900
4	6 7/16	6 5/8	4 5/16	2	1 5/8	3 7/8	1/2	2.7 LB.	11,600
6	9	9 1/4	6 1/8	2 3/4	2 5/16	5 9/16	1/2	5.3 LB.	16,800
8	11 7/16	12	8 1/4	3 5/8	2 7/8	7 3/16	3/4	12 LB.	22,400
10	13 1/4	14 1/8	10 1/8	4 7/8	3 5/8	8 1/4	3/4	17 LB.	28,000
12	13 13/16	16 7/16	12 3/8	5	4 1/16	8	3/4	19 LB.	32,000

