

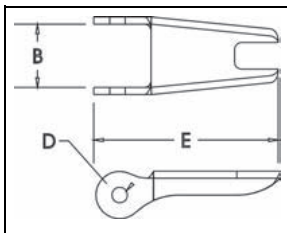
Crosby® Hook Latch Kits

S-4320 LATCH KITS



- Heavy duty stamped latch interlocks with the hook tip.
- High cycle, long life spring.
- Can be made into a "Positive Locking" Hook when proper cotter pin is utilized.
- Latch kits shipped unassembled and individually packaged with instructions.

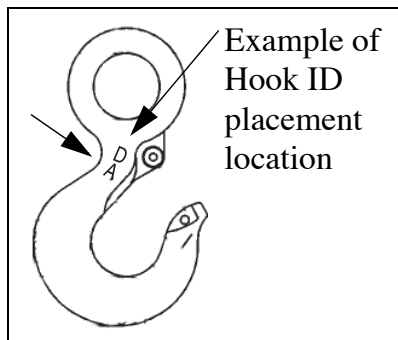
IMPORTANT: The new S-4320 Latch Kit will not fit the old style 319, 320 and 322 hooks.



S-4320 Replacement Latch Kit for New 319N, and 320N, 322N and 339N Hooks.

Hook Size (t)			Hook ID Code	S-4320 Stock No.	SS-4320 Stock No.*	Weight Each (lbs.)	Dimensions (in.)		
Carbon	Alloy	Bronze					B	D	E
3/4	1	.5	D	1096325	1097100	.03	.50	.15	1.44
1	1-1/2	.6	F	1096374	1097109	.04	.54	.17	1.56
1-1/2	2	1	G	1096421	1097118	.04	.63	.17	1.66
2	3	1.4	H	1096468	1097127	.06	.66	.17	1.91
3	5	2	I	1096515	1097136	.10	.83	.20	2.31
5	7	3.5	J	1096562	1097145	.15	1.04	.20	2.88
7-1/2	11	5	K	1096609	1097154	.28	1.25	.27	3.56
10	15	6.5	L	1096657	1097163	.33	1.35	.27	3.81
15	22	10	N	1096704	1097172	.84	1.66	.39	5.18

* SS-4320 is Stainless Steel construction with cad plated steel nuts.



Copyright © 2008 The Crosby Group, Inc.
All Rights Reserved

Crosby® Hook Latch Kits

PL LATCH KITS



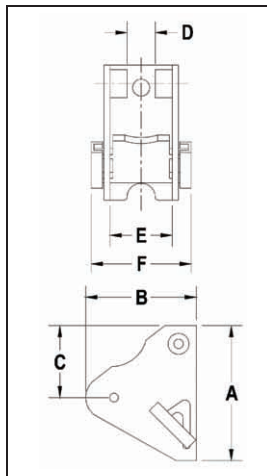
PL LATCH

LATCH ORDERING INSTRUCTIONS

1. Specify PL, PL-N or PL-O latch kit stock number from charts below.
2. Specify capacity of hook to which latch will be assembled.
3. Specify hook material (carbon or alloy).

NOTE: The PL latch will not work on 319N, 320N or 322N hooks. The PL-N/O Latches, in the sizes available, will work on both the old and new style hooks.

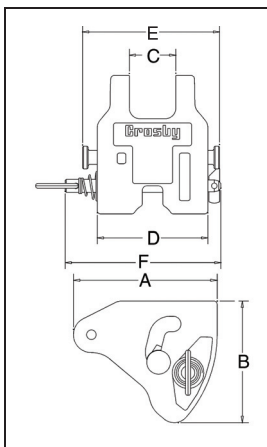
PL-N/O LATCH KITS



PL Latch Kits

- Hot dip galvanized.
- Heavy duty latch with easy operating features.
- Flapper lever indicates locked or unlocked position.
- Assembly instructions included with each latch.
- Meets the intent of OSHA Rule 1926.550 (g) (when secured with the bolt, nut and pin) for lifting personnel.

Hook Size (t)		Hook ID Code	PL Latch Kit Stock No.	Weight Each (lbs.)	Dimensions (in.)					
Carbon	Alloy				A	B	C	D	E	F
3	4-1/2	I	1093711	.54	2.57	2.34	1.94	.56	1.13	2.00
5	7	J	1093712	.66	3.00	2.34	2.00	.63	1.38	2.22
7-1/2	11	K	1093713	1.00	3.63	2.77	2.38	.63	1.63	2.38
10	15	L	1093714	1.25	4.00	3.22	2.69	.63	1.88	3.38
15	22	N	1093715	2.96	5.31	4.00	2.91	.84	2.38	3.44
20	30	O	1093716	4.05	6.00	4.44	3.19	1.06	2.88	4.25
25	37	P	1093717	8.63	7.00	6.63	4.06	2.24	4.50	6.12
30	45	S	1093718	10.00	6.75	7.00	4.03	2.24	4.75	6.38
40	60	T	1093719	14.30	8.00	7.66	4.38	3.46	5.50	7.25
50	75	U	1093720	27.00	9.88	8.19	5.13	3.38	6.50	8.88
-	100-150	W - X	1093721	33.25	10.88	11.06	6.38	3.38	7.50	10.00
-	200	Y	1093723	45.00	11.88	11.19	6.38	3.38	8.75	11.25
-	300	Z	1093724	55.00	12.50	12.19	8.00	3.38	9.75	13.00



PL-N/O Latch Kits

- Heavy duty latch with easy operating features.
- PL-N designed for Crosby 319N & 320N style hooks, PL-O designed for Crosby 319 & 320 old style hooks.
- Flapper lever indicates locked or unlocked position.
- Assembly instructions included with each latch.
- Meets the intent of OSHA Rule 1926.550 (g) (when secured with the supplied toggle pin) for lifting personnel.

Hook Size (t)		Hook ID Code	PL-N Stock No.	PL-O Stock No.	Weight Each (lbs.)	Dimensions (in.)					
Carbon	Alloy					A	B	C	D	E	F
3	4.5 / 5 *	I	1092000	1091900	.8	2.40	2.01	.83	2.13	2.71	3.44
5	7	J	1092001	1091901	1.3	2.94	2.50	1.00	2.52	3.19	3.83
7-1/2	11	K	1092002	1091902	2.0	3.63	3.02	1.19	2.75	3.44	4.38
10	15	L	1092003	1091903	2.8	4.00	3.39	1.34	3.19	4.00	4.50
15	22	N	1092004	1091904	4.9	5.19	4.32	1.61	3.86	4.81	5.13

* "N" style hooks are rated at 5 tonnes.

Copyright © 2008 The Crosby Group, Inc.
All Rights Reserved



Crosby® Hook Latch Kits

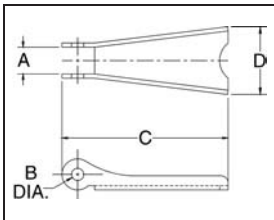
SS-4055



LATCH ORDERING INSTRUCTIONS

1. Specify latch kit stock number.
2. Specify capacity of hook to which latch will be assembled.
3. Specify hook material (carbon or alloy).

NOTE: These latches will not work on new "N" style Hooks.

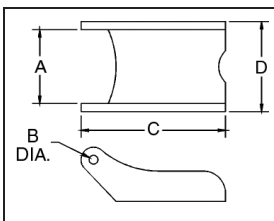


SS-4055 Latch Kits

- Stainless steel construction with cadmium plated steel nuts.
- Shipped packaged and unassembled.
- Instructions included for easy field assembly.

Hook Size (t)			Hook ID Code	SS-4055 Stock No.	Weight Each (lbs.)	Dimensions (in.)			
Carbon	Alloy	Bronze				A	B	C	D
3/4	1	.5	D	1090027	.02	.38	.16	1.44	.59
1	1-1/2	.6	F	1090045	.02	.38	.16	1.60	.59
1-1/2 - 2	2 - 3	1.0 - 1.4	G / H	1090063	.03	.47	.19	1.84	.82
3	4-1/2	2.0	I	1090081	.06	.56	.17	2.41	1.00
5	7	3.5	J	1090107	.11	.58	.20	2.97	1.21
7-1/2 - 10	11 - 15	5.0 - 6.5	K / L	1090125	.17	.59	.27	3.66	1.50
15	22	10.0	N	1090143	.39	.83	.39	4.94	1.90
20	30	--	O	1090161	.63	.94	.52	5.88	2.56
25 - 30	37 - 45	--	P / S	1090189	1.12	2.19	.39	6.50	3.84
40	60	--	T	1090205	1.77	3.31	.52	7.88	4.12

S-4088



S-4088 Alloy Hook Latch Kits

- To be used on A-327 and A-339 Grade 8 Sling Hooks.
- Latch Kits shipped unassembled and individually packaged with instructions.

Hook Chain Size (in.)	S-4088 Stock No.	Weight Each (lbs.)	Dimensions (in.)			
			A	B	C	D
9/32 (1/4)	1090250	.06	.78	.16	2.03	.94
3/8	1090251	.14	1.03	.19	2.69	1.25
1/2	1090252	.15	1.03	.19	3.00	1.25
5/8	1090253	.15	1.03	.19	3.25	1.25
3/4	1090254	.15	1.53	.26	4.13	1.88
7/8	1090255	.15	1.53	.26	4.66	2.00

Copyright © 2008 The Crosby Group, Inc.
All Rights Reserved