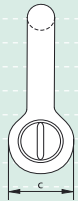
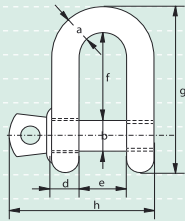




G-4151



## Green Pin® Standard Shackles dee shackles with screw collar pin

- **Material** : bow and pin high tensile steel, Grade 6, quenched and tempered
- **Safety Factor** : MBL equals 6 x WLL
- **Standard** : EN 13889 and  
meets performance requirements of US Fed. Spec. RR-C-271 Type IVB Class 2, Grade A
- **Finish** : hot dipped galvanized
- **Temperature Range** : -20 °C up to +200 °C
- **Certification** : at no extra charges this product can be supplied with a works certificate, certificate of basic raw material, manufacturer test certificate and/or EC Declaration of Conformity

| working load limit | diameter bow | diameter pin | diameter eye | width eye | width inside | length inside | length | length bolt | weight each |
|--------------------|--------------|--------------|--------------|-----------|--------------|---------------|--------|-------------|-------------|
| tons               | a mm         | b mm         | c mm         | d mm      | e mm         | f mm          | g mm   | h mm        | kg          |
| 0.33               | 5            | 6            | 12.5         | 5         | 9.5          | 19            | 38     | 31          | 0.02        |
| 0.5                | 7            | 8            | 17           | 7         | 12           | 22            | 47     | 40          | 0.05        |
| 0.75               | 9            | 10           | 21           | 9         | 13.5         | 26            | 56     | 49          | 0.09        |
| 1                  | 10           | 11           | 23           | 10        | 17           | 32            | 66     | 56          | 0.14        |
| 1.5                | 11           | 13           | 26           | 11        | 19           | 37            | 74     | 68          | 0.19        |
| 2                  | 13.5         | 16           | 34           | 13.5      | 22           | 43            | 85     | 76          | 0.32        |
| 3.25               | 16           | 19           | 40           | 16        | 27           | 51            | 105    | 93          | 0.54        |
| 4.75               | 19           | 22           | 47           | 19        | 31           | 59            | 125    | 107         | 0.87        |
| 6.5                | 22           | 25           | 53           | 22        | 36           | 73            | 144    | 123         | 1.34        |
| 8.5                | 25           | 28           | 60           | 25        | 43           | 85            | 161    | 141         | 2.08        |
| 9.5                | 28           | 32           | 67           | 28        | 47           | 90            | 179    | 158         | 2.77        |
| 12                 | 32           | 35           | 74           | 32        | 51           | 94            | 199    | 176         | 3.72        |
| 13.5               | 35           | 38           | 80           | 35        | 57           | 115           | 220    | 192         | 5.14        |
| 17                 | 38           | 42           | 89           | 38        | 60           | 127           | 239    | 208         | 6.85        |
| 25                 | 45           | 50           | 104          | 45        | 74           | 149           | 283    | 250         | 11.45       |
| 35                 | 50           | 57           | 111          | 50        | 83           | 171           | 333    | 281         | 16.86       |
| 42.5               | 57           | 65           | 134          | 57        | 95           | 190           | 360    | 321         | 24.61       |
| 55                 | 65           | 70           | 145          | 65        | 105          | 203           | 399    | 355         | 32.65       |

In inch

| working load limit | diameter bow    | diameter pin     | diameter eye      | width eye         | width inside      | length inside     | length             | length bolt       | weight each |
|--------------------|-----------------|------------------|-------------------|-------------------|-------------------|-------------------|--------------------|-------------------|-------------|
| tons               | a inch          | b inch           | c inch            | d inch            | e inch            | f inch            | g inch             | h inch            | lbs         |
| 0.33               | $\frac{3}{16}$  | $\frac{1}{4}$    | $\frac{1}{2}$     | $\frac{3}{16}$    | $\frac{3}{8}$     | $\frac{3}{4}$     | $1 \frac{17}{32}$  | $1 \frac{1}{4}$   | 0.04        |
| 0.5                | $\frac{1}{4}$   | $\frac{5}{16}$   | $\frac{11}{16}$   | $\frac{9}{32}$    | $\frac{1}{2}$     | $\frac{7}{8}$     | $1 \frac{7}{8}$    | $1 \frac{9}{16}$  | 0.11        |
| 0.75               | $\frac{5}{16}$  | $\frac{3}{8}$    | $\frac{13}{16}$   | $\frac{11}{32}$   | $\frac{17}{32}$   | $1 \frac{1}{32}$  | $2 \frac{3}{16}$   | $1 \frac{15}{16}$ | 0.2         |
| 1                  | $\frac{3}{8}$   | $\frac{7}{16}$   | $\frac{29}{32}$   | $\frac{3}{8}$     | $\frac{11}{16}$   | $1 \frac{1}{4}$   | $2 \frac{19}{32}$  | $2 \frac{3}{16}$  | 0.3         |
| 1.5                | $\frac{7}{16}$  | $\frac{1}{2}$    | $1 \frac{1}{32}$  | $\frac{7}{16}$    | $\frac{3}{4}$     | $1 \frac{1}{2}$   | $2 \frac{29}{32}$  | $2 \frac{11}{16}$ | 0.42        |
| 2                  | $\frac{1}{2}$   | $\frac{5}{8}$    | $1 \frac{11}{32}$ | $\frac{17}{32}$   | $\frac{7}{8}$     | $1 \frac{23}{32}$ | $3 \frac{11}{32}$  | $3$               | 0.7         |
| 3.25               | $\frac{5}{8}$   | $\frac{3}{4}$    | $1 \frac{19}{32}$ | $\frac{5}{8}$     | $1 \frac{3}{32}$  | $2$               | $4 \frac{1}{8}$    | $3 \frac{11}{16}$ | 1.19        |
| 4.75               | $\frac{3}{4}$   | $\frac{7}{8}$    | $1 \frac{7}{8}$   | $\frac{3}{4}$     | $1 \frac{1}{4}$   | $2 \frac{5}{16}$  | $4 \frac{29}{32}$  | $4 \frac{3}{16}$  | 1.92        |
| 6.5                | $\frac{7}{8}$   | $1$              | $2 \frac{3}{32}$  | $\frac{7}{8}$     | $1 \frac{7}{16}$  | $2 \frac{7}{8}$   | $5 \frac{11}{16}$  | $4 \frac{13}{16}$ | 2.95        |
| 8.5                | $1$             | $1 \frac{1}{8}$  | $2 \frac{11}{32}$ | $1$               | $1 \frac{23}{32}$ | $3 \frac{11}{32}$ | $6 \frac{5}{16}$   | $5 \frac{9}{16}$  | 4.59        |
| 9.5                | $1 \frac{1}{8}$ | $1 \frac{1}{4}$  | $2 \frac{5}{8}$   | $1 \frac{1}{8}$   | $1 \frac{7}{8}$   | $3 \frac{9}{16}$  | $7 \frac{1}{32}$   | $6 \frac{3}{16}$  | 6.1         |
| 12                 | $1 \frac{1}{4}$ | $1 \frac{3}{8}$  | $2 \frac{29}{32}$ | $1 \frac{9}{32}$  | $2$               | $3 \frac{23}{32}$ | $7 \frac{13}{16}$  | $6 \frac{29}{32}$ | 8.2         |
| 13.5               | $1 \frac{3}{8}$ | $1 \frac{1}{2}$  | $3 \frac{5}{32}$  | $1 \frac{3}{8}$   | $2 \frac{1}{4}$   | $4 \frac{17}{32}$ | $8 \frac{11}{16}$  | $7 \frac{9}{16}$  | 11.33       |
| 17                 | $1 \frac{1}{2}$ | $1 \frac{5}{8}$  | $3 \frac{1}{2}$   | $1 \frac{17}{32}$ | $2 \frac{11}{32}$ | $5$               | $9 \frac{3}{8}$    | $8 \frac{3}{16}$  | 15.1        |
| 25                 | $1 \frac{3}{4}$ | $2$              | $4 \frac{1}{8}$   | $1 \frac{25}{32}$ | $2 \frac{29}{32}$ | $5 \frac{7}{8}$   | $11 \frac{5}{32}$  | $9 \frac{13}{16}$ | 25.23       |
| 35                 | $2$             | $2 \frac{1}{4}$  | $4 \frac{11}{32}$ | $1 \frac{31}{32}$ | $3 \frac{9}{32}$  | $6 \frac{3}{4}$   | $13 \frac{1}{8}$   | $11 \frac{3}{8}$  | 37.17       |
| 42.5               | $2 \frac{1}{4}$ | $2 \frac{9}{16}$ | $5 \frac{9}{32}$  | $2 \frac{1}{4}$   | $3 \frac{3}{4}$   | $7 \frac{1}{2}$   | $14 \frac{5}{32}$  | $12 \frac{5}{8}$  | 54.26       |
| 55                 | $2 \frac{1}{2}$ | $2 \frac{3}{4}$  | $5 \frac{3}{4}$   | $2 \frac{9}{16}$  | $4 \frac{1}{8}$   | $8$               | $15 \frac{23}{32}$ | $14$              | 71.98       |



DNV

TYPE APPROVED PRODUCT  
CERTIFICATION NOTE 2,7-1  
CERTIFICATE NO. 9-4208

