



## HYDRO-LINK/HP

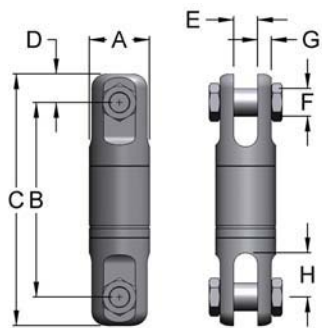
- Miller Hydro-Link swivels are machined from a special non-magnetic, austenitic stainless steel alloy of exceptionally high strength and corrosion resistance which maintains good mechanical properties at elevated and sub-zero temperatures.



- Hydro-Link/HP** high pressure swivels contain special pressure compensating seals and oil-filled cavities for reliable operation to depths of 10,000 feet
- Working Load Limits from 0.75 to 600 tons
- Angular contact bearing design extends the life of the wire rope, and maximizes efficiency, reliability and service life
- Stainless steel parts are passivated for added corrosion resistance
- Design Factor of 5 to 1 minimum for swivels 35 tons and below
- Design Factor of 4 to 1 minimum for swivels 45 tons and above
- Proof Load is 2 x WLL
- Models 8.5 tons and up include lubrication fitting
- Special designs available

## SWIVELS- HYDRO LINK/HP, HIGH PRESSURE, STAINLESS STEEL

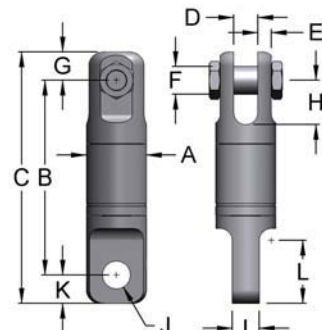
### CLEVIS TO CLEVIS - TYPE 151HP, STAINLESS STEEL



WLL* Tons	Model Number	Rope Size	A	B	C	D	E	F	G	H	Weight Lbs.
0.75	BB-151HP	1/4	1.31	3.69	5.56	.44	0.31	.38	.22	0.56	1
1.5	B-151HP	3/8	1.63	5	6.38	.69	0.5	.5	.31	0.78	2
3	C-151HP	1/2	2.00	5.44	9.31	.94	0.75	.75	.38	1.19	5
5	D-151HP	5/8	2.50	9.19	11.44	1.13	1	.88	.56	1.56	10
8.5	EE-151HP	3/4	3.00	10.38	13.06	1.34	1.56	1.19	.53	2.03	15
15	GG-151HP	1	4.00	15.5	19	1.75	1.75	1.5	.81	3.5	43
35	HH-151HP	1 1/2	5.00	18.19	22.94	2.38	2	2	1.13	3.69	85
45	I-151HP		6.00	22.56	28.56	3.00	2.5	2.25	1.25	4	156
60	JJ-151HP		7.00	24	31	3.50	3	2.5	1.50	4.5	229
75	K-151HP		8.00	27	35	4.00	3.5	3	1.75	5	328
100	KK-151HP		10.00	36.5	47.5	5.50	4.06	4	2.00	6.75	747

\* Design factors for WLL=35 T and below are 5:1; for 45T and above 4:1

### CLEVIS TO EYE - TYPE 152HP, STAINLESS STEEL



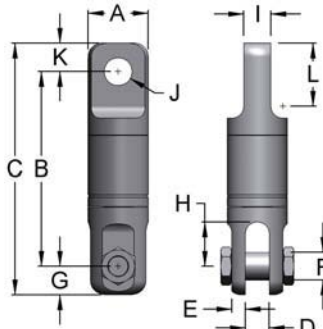
WLL* Tons	Model Number	Rope Size	A	B	C	D	E	F	G	H	I	J	K	L	Weight Lbs.
0.75	BB-152HP	1/4	1.31	4.75	5.56	.31	0.22	.375	.44	0.56	.31	.38	.44	0.94	1
1.5	B-152HP	3/8	1.63	5	6.31	.50	0.31	.5	.68	0.78	.50	.66	.63	1.34	2
3	C-152HP	1/2	2.00	7.31	9.31	.75	0.38	.75	.94	1.19	.75	.91	1	1.94	5
5	D-152HP	5/8	2.50	9.13	11.44	1.00	0.56	.88	1.13	1.56	1.00	1.28	1.19	2.5	11
8.5	EE-152HP	3/4	3.00	10.25	13.09	1.56	0.53	1.06	1.34	2.09	1.25	1.41	1.5	3.13	16
15	GG-152HP	1	4.00	15.25	19.13	1.75	0.81	1.5	1.75	3.5	2.00	2.03	2.13	4.91	43
35	HH-152HP	1 1/2	5.00	18.19	22.94	2.00	1.13	2.03	2.38	3.69	2.25	2.31	2.38	5.25	82
45	I-152HP		6.00	22.56	28.56	2.50	1.25	2.25	3.00	4	2.50	2.53	3	7	149
60	JJ-152HP		7.00	24	31	3.00	1.5	2.5	3.50	4.5	3.50	2.88	3.5	7	226
75	K-152HP		8.00	27	35	3.50	1.75	3	4.00	5	3.50	3.38	4	8.13	333
100	KK-152HP		10.00	36.5	47.5	4.06	2	4	5.50	6.75	4.50	4.03	5.5	11.38	698

\* Design factors for WLL=35 T and below are 5:1; for 45T and above 4:1



## SWIVELS- HYDRO LINKHP, HIGH PRESSURE, STAINLESS STEEL

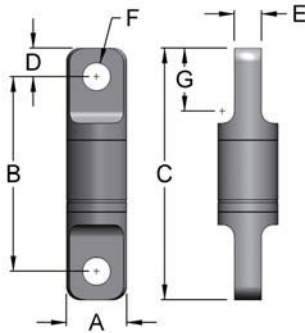
### EYE TO CLEVIS - TYPE 251HP, STAINLESS STEEL



WLL* Tons	Model Number	Rope Size	A	B	C	D	E	F	G	H	I	J	K	L	Weight Lbs.
0.75	BB-251HP	1/4	1.31	4.69	5.56	.31	0.22	.38	.44	0.56	.31	.39	.44	0.94	1
1.5	B-251HP	3/8	1.63	5	6.31	.50	0.31	.5	.68	0.78	.50	.66	.63	1.34	2
3	C-251HP	1/2	2.00	7.31	9.31	.75	0.38	.75	.94	1.19	.75	.91	1	1.94	5
5	D-251HP	5/8	2.50	9.13	11.44	1.00	0.56	.88	1.13	1.56	1.00	1.28	1.19	2.5	10
8.5	EE-251HP	3/4	3.00	10.25	13.09	1.56	0.53	1.19	1.34	2.09	1.25	1.41	1.5	3.13	16
15	GG-251HP	1	4.00	15.25	19.13	1.75	0.81	1.5	1.75	3.5	2.00	2.03	2.13	4.91	43
35	HH-251HP	1 1/2	5.00	18.19	22.94	2.00	1.13	2	2.38	3.69	2.25	2.31	2.38	5.25	80
45	I-251HP		6.00	22.56	28.56	2.50	1.25	2.25	3.00	4	2.50	2.53	3	7	149
60	JJ-251HP		7.00	24	31	3.00	1.5	2.5	3.50	4.5	3.50	2.88	3.5	7	233
75	K-251HP		8.00	27	35	3.50	1.75	3	4.00	5	3.50	3.03	4	8.25	333
100	KK-251HP		10.00	36.5	47.5	4.06	2	4	5.50	6.75	4.50	4.03	5.5	11.38	731

\* Design factors for WLL=35 T and below are 5:1; for 45T and above 4:1

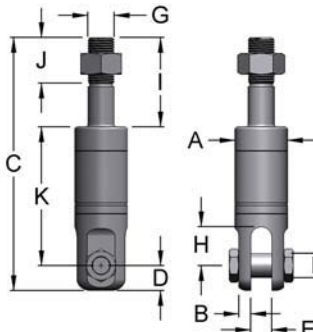
### EYE TO EYE - TYPE 252HP, STAINLESS STEEL



WLL* Tons	Model Number	Rope Size	A	B	C	D	E	F	G	Weight Lbs.
0.75	BB-252HP	1/4	1.31	4.94	5.88	.44	0.31	.39	.94	1
1.5	B-252HP	3/8	1.63	5	6.25	.69	0.5	.66	1.34	2
3	C-252HP	1/2	2.00	7.31	9.31	1.00	0.75	.91	1.94	5
5	D-252HP	5/8	2.50	9.06	11.44	1.19	1	1.28	2.50	10
8.5	EE-252HP	3/4	3.00	10.13	13.06	1.50	1.25	1.41	3.13	16
15	GG-252HP	1	4.00	15.13	19.38	2.13	2	2.03	4.91	43
35	HH-252HP	1 1/2	5.00	18.19	22.94	2.38	2.25	2.31	5.25	79
45	I-252HP		6.00	22.56	28.56	3.00	2.5	2.53	7.00	142
60	JJ-252HP		7.00	24	31	3.50	3.5	2.88	7.00	231
75	K-252HP		8.00	27	35	4.00	3.5	3.38	8.25	340
100	KK-252HP		10.00	36.5	47.5	5.50	4.5	4.03	11.38	704

\* Design factors for WLL=35 T and below are 5:1; for 45T and above 4:1

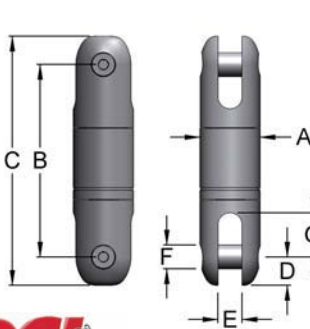
### STUD TO CLEVIS - TYPE 351HP, STAINLESS STEEL



WLL* Tons	Model Number	Rope Size	A	B	C	D	E	F	G	H	I	J	K	Weight Lbs.
0.75	BB-351HP	1/4	1.31	0.22	5.81	.44	0.31	.38	.63	0.56	2.00	1.50	4.38	1
1.5	B-351HP	3/8	1.63	0.31	7	.69	0.5	.5	.75	0.78	2.00	1.50	4.31	2
3	C-351HP	1/2	2.00	0.38	10.44	.88	0.75	.75	.88	1.19	3.00	2.63	5.25	5
5	D-351HP	5/8	2.50	0.56	11.19	1.13	1	.88	1.25	1.56	3.50	3.13	6.56	11
8.5	EE-351HP	3/4	3.00	0.53	13.78	1.34	1.56	1.19	1.50	2.09	4.00	3.00	8.44	15
15	GG-351HP	1	4.00	0.81	18.69	1.75	1.75	1.5	2.00	3.5	5.50	3.00	11.44	40
35	HH-351HP	1 1/2	5.00	1.13	25.56	2.38	2	2	2.50	3.69	8.50	4.25	14.69	84
45	I-351HP		6.00	1.25	28	3.00	2.5	2.25	3.00	4	8.00	4.00	17	141
60	JJ-351HP		7.00	1.5	31.5	3.50	3	2.5	3.25	4.5	8.00	4.00	20	219
75	K-351HP		8.00	1.75	36.5	4.00	3.5	3	3.75	5	10.00	5.00	22.5	295
100	KK-351HP		10.00	2	54.75	5.50	4.06	4	6.25	6.75	20.50	7.25	28.75	699

\* Design factors for WLL=35 T and below are 5:1; for 45T and above 4:1

### BULLET NOSE TO BULLET NOSE - TYPE 454HP, STAINLESS STEEL



WLL* Tons	Model Number	Rope Size	A	B	C	D	E	F	G	Weight Lbs.
0.75	BB-454HP	1/4	1.31	4.88	5.63	.44	0.31	.38	.56	1
1.5	B-454HP	3/8	1.63	5	6.25	.56	0.5	.44	.81	2
3	C-454HP	1/2	2.00	6.5	8.13	.81	0.75	.63	.94	4
5	D-454HP	5/8	2.50	9.25	11.38	1.13	1	.88	1.56	9
8.5	EE-454HP	3/4	3.00	10.56	13.13	1.25	1.28	1	2.13	16
15	GG-454HP	1	4.00	15	18.5	1.75	1.75	1.5	3.25	42
35	HH-454HP	1 1/2	5.00	18.16	22.91	2.38	2	2	3.69	87

\* Design factors for WLL=35 T and below are 5:1; for 45T and above 4:1