

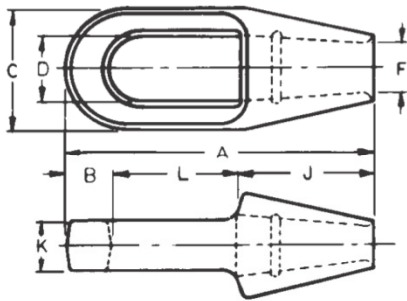
## SOCKETS Standard Closed Spelter Sockets



### CLOSED SPELTER SOCKETS GALVANIZED



LB - 305



LBNO Standard Type Closed Spelter Sockets illustrate perfectly the principle of all LBNO wire rope fittings. They are designed to fit the rope properly and to develop the full strength of the wire rope. LBNO Sockets have grooves in the socket basket for superior strength and holding power when pouring with zinc. LBNO Sockets comply with both Federal and International Standards to allow for use with resin pour.

When ordering Always Specify **LBNO Quality Closed Spelter Sockets**. All of these advantages have been demonstrated over and over again, by outstanding on-the-job performance.

**Caution:** When attaching spelter sockets to wire rope it is important to follow standard procedures as described by the Wire Rope Technical Board. Brooming and cleaning of wire rope is important. When resin is used follow manufacturers assembly instructions.

Wire Rope Diameter Inches	DIMENSION IN INCHES								Weight Pounds Each
	A	B	C	D	F	J	K	L	
1-1/2	14-1/8	2	5-3/8	3-1/8	1-5/8	6	2-1/2	6-1/8	29
1-5/8	15-3/4	2-1/8	5-3/4	3-1/4	1-3/4	6-1/2	2-3/4	6-3/4	39.5
1-3/4 - 1-7/8	17-1/2	2-3/16	6-3/4	3-17/32	2	7-1/2	3	7-13/16	56.5
2 - 2-1/8	19-3/4	2-7/16	7-5/8	3-25/32	2-1/4	8-1/2	3-1/4	8-13/16	82
2-1/4 - 2-3/8	21-5/8	2-7/8	8-1/2	4-9/32	2-1/2	9	3-5/8	9-3/4	103.5
2-1/2 - 2-5/8	23-1/2	3-1/8	9-1/2	4-25/32	2-7/8	9-3/4	4	10-5/8	143.5
2-3/4 - 2-7/8	25-1/2	5-1/2	10-3/4	5-1/2	3-1/4	11	4-7/8	11-5/8	226
3 - 3-1/8	27	3-1/4	11-1/2	6	3-1/2	12	5-1/4	11-3/4	259
3-1/2 - 3-5/8	31	4	13	6-3/4	3-7/8	14	6-1/4	13	415
3-3/4 - 4	33-1/4	4-1/4	14-1/4	7-1/4	4-1/4	15	7	14	540

Dimensions are in accordance with Standard Foundry Practice.

## SOCKETS

### Standard Open

### Spelter Sockets



LBNO Standard Type Open Spelter Sockets illustrate perfectly the principle of all LBNO wire rope fittings. They are designed to fit the rope properly and to develop the full strength of the wire rope. LBNO Sockets have grooves in the socket basket for superior strength and holding power when pouring with zinc. LBNO Sockets comply with both Federal and International Standards to allow for use with resin pour.

When ordering Always Specify **LBNO Quality Open Spelter Sockets**. All of these advantages have been demonstrated over and over again, by outstanding on-the-job performance.

**Caution:** When attaching spelter sockets to wire rope it is important to follow standard procedures as described by the Wire Rope Technical Board Brooming and cleaning of wire rope is important. When resin is used follow manufacturers assembly instructions.



OPEN SPELTER SOCKETS STANDARD-GALVANIZED									CAST STEEL HEAT TREATED
Wire Rope Diameter Inches	DIMENSION IN INCHES								Weight Pounds Each
	A	C	D	F	J	L	M	N	
1-1/2	15-1/8	3	2-3/4	1-5/8	6	6-3/8	5-3/8	1-3/16	42.5
1-5/8	16-1/4	3	3	1-3/4	6-1/2	6-1/2	5-3/4	1-5/16	57
1-3/4 - 1-7/8	18-1/4	3-1/2	3-1/2	2	7-1/2	7	6-1/2	1-9/16	81.5
2 - 2-1/8	21-1/2	4	3-3/4	2-1/4	8-1/2	9	7	1-13/16	114
2-1/4 - 2-3/8	23-1/2	4-1/2	4-1/4	2-1/2	9	10	7-3/4	2-1/8	162
2-1/2 - 2-5/8	25-1/2	5	4-3/4	2-7/8	9-3/4	10-3/4	8-1/2	2-3/8	228
2-3/4 - 2-7/8	27-1/2	5-1/2	5	3-3/16	11	16-1/4	9	3-1/4	338
3 - 3-1/8	29	5-3/4	5-1/4	3-5/8	12	11-1/4	9-1/2	3	365
3-1/2 - 3-5/8	33-1/4	6-3/4	6	3-7/8	14	12-1/2	10-3/4	3-1/4	546
3-3/4 - 4	36-1/4	7-1/2	7	4-1/4	15	13-1/2	12-1/2	3-1/2	729
4-1/2	44-7/8	9-1/4	8-1/2	4-7/8	18-1/2	16-3/4	15-1/2	4-3/8	1550

Dimensions are in accordance with Standard Foundry Practice.