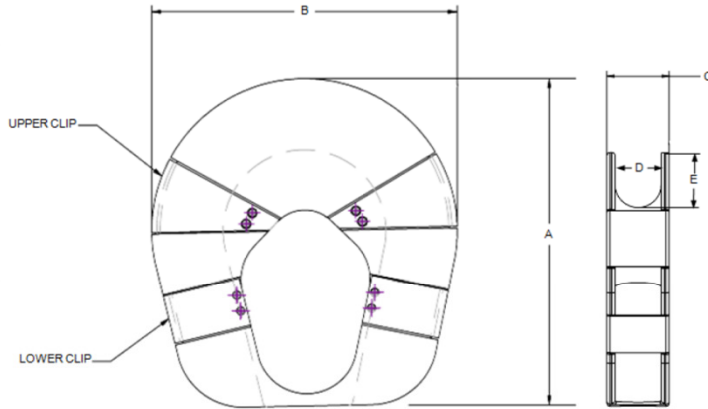


# WORKHORSE SRT

## Synthetic Rope Thimble



- Individually traceable
- MBL exceeds corresponding diameter HMPE ropes
- 100% rope protection at eye
- Detachable clips = inserts into existing rope eyes
- 3:1 D/d ratio maximizes grommet strength

Rope Diameter (inches) *		Min Breaking Load Limit (Tons)	Dimensions in Inches					Weight (lbs) **
From	To		A	B	C	D	E	
1.500	2.000	354.9	12.3	11.6	3.45	2.20	2.78	42
2.000	2.500	522.5	14.6	14.3	4.00	2.75	3.38	79
2.500	3.000	731.9	17.3	17.0	4.55	3.30	3.98	121
2.750	3.250	875.2	19.7	18.3	4.83	3.58	4.28	144
3.000	3.500	978.8	20.9	19.7	5.10	3.85	4.58	168
3.500	4.000	1246.7	23.2	22.4	5.65	4.40	5.18	221
4.000	4.500	1642.4	25.7	25.7	6.20	4.95	5.78	295
4.500	5.000	1884.9	28.2	27.8	6.75	5.50	6.38	343
5.000	5.500	2248.7	30.2	30.5	7.30	6.05	6.98	412
5.500	6.000	2643.3	33.0	33.2	7.85	6.60	7.58	486
6.000	6.500	3068.8	35.0	35.9	8.40	7.15	8.18	566
6.500	7.000	3525.2	37.0	38.6	8.95	7.70	8.78	651

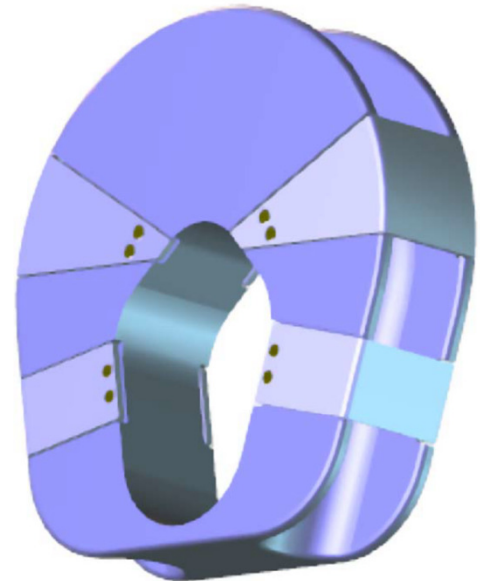
\* Additional sizes available on request

\*\* Wgt identified is handling wgt w/o upper and lower clips. Average clip wgt = 5 lbs

Rope Diameter (millimeters) *		Min Breaking Load Limit (Tonnes)	Dimensions in Millimeters					Weight (kgs) **
From	To		A	B	C	D	E	
38	51	322.0	313	293	88	56	70	19
51	64	474.0	370	362	102	70	86	36
64	76	664.0	440	431	116	84	101	55
70	83	794.0	501	465	123	91	109	65
76	89	888.0	531	501	130	98	116	76
89	102	1131.0	589	568	144	112	131	100
102	114	1490.0	652	653	157	126	147	134
114	127	1710.0	716	705	171	140	162	156
127	140	2040.0	767	775	185	154	177	187
140	152	2398.0	838	843	199	168	192	220
152	165	2784.0	889	912	213	182	208	257
165	178	3198.0	940	980	227	196	223	295

\* Additional sizes available on request

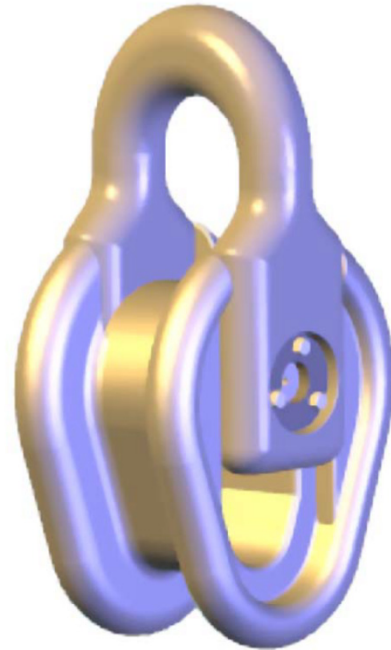
\* Wgt identified is handling wgt w/o upper and lower clips. Average clip wgt = 5 lbs



**Made in USA**

## WORKHORSE SRC Synthetic Rope Connector

- Individually traceable
- Fitted for RFID chip
- Won't damage rope on spool
- MBL exceeds corresponding diameter polyester ropes
- Takes freeboard side-load
- Fits open-link chain, connecting links, Pee Wee Sockets and itself
- Easy handling on deck
- Detachable = inserts into existing rope eyes
- 100% rope protection at eye



**Made in USA**

6 1/2 - 7 inch Rope Diameter *		
Dimensions	Inches	Millimeters
A	24 1/2	622
B	11 3/8	289
C	45 7/8	1165
D	14 3/4	375
E	19 1/4	489
F	8 1/2	216
G	16 1/2	419
Min Breaking Load Limit	1250 tons	1134 tonnes
Weight (lbs)	1612 lbs	731 kgs

\* Additional sizes available on request

