

DCL Services

Rigging & Mooring	A1
Specialty Lifts	A2
Load Testing & Inspections	A3
Rental Inventory & Portable Testing	A4
Asset Management Program	A5
INFO CHIP (RFID) Desktop	A6
INFO CHIP (RFID) Online	A7
INFO CHIP (RFID) Reader	A8
Spooling & Fender Repair	A9

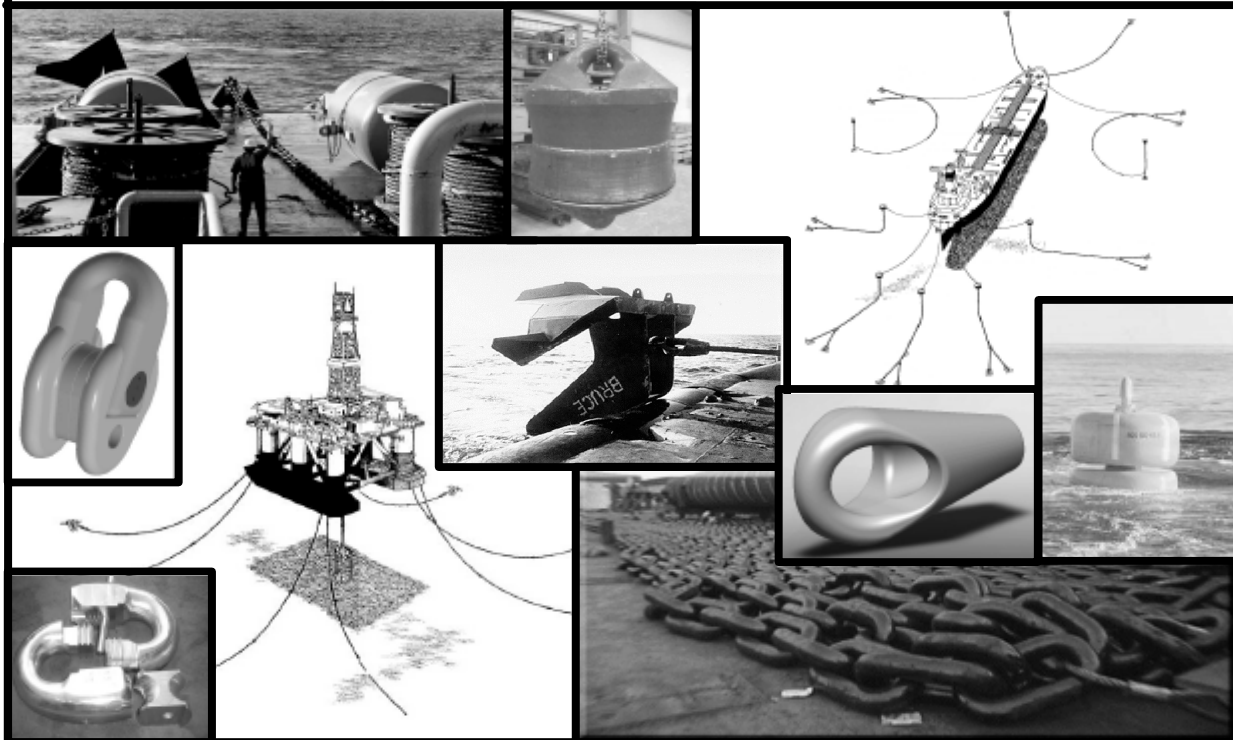
RIGGING SERVICES

6 Presses from 500 ton up to 3000 ton
Capabilities to handle up to 4-1/2" wire rope diameter



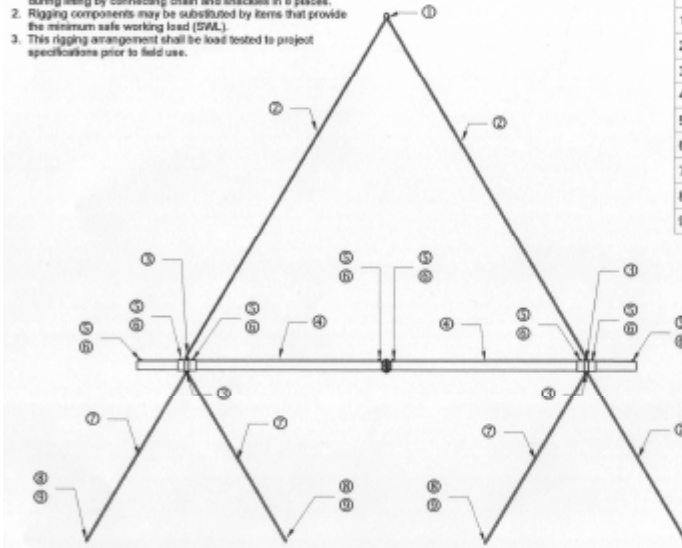
MOORING SERVICES

Engineered Design & Equipment



ENGINEERED LIFTS & SPREADER BARS

1. Connecting links will be used to secure sliding sleeves during lifting by connecting chain and shackles in 8 places.
2. Rigging components may be substituted by items that provide the minimum safe working load (SWL).
3. This rigging arrangement shall be load tested to project specifications prior to field use.



Item	Qty	Description	Min SWL
1	1	2" A-342 Crosby Master Link	95 kips
2	2	IWRC - Length 64 ft	55 kips
3	4	1 3/4" G-2130 Shackle	25 tonne
4	2	3/4" Spectrum 8 Chain (43 ft)	27 kips
5	8	1 1/4" G-2130 Shackle	12 tonne
6	8	3/4" A-1337 Connecting Link	27 kips
7	4	IWRC - Length 32 ft	45 kips
8	4	1 3/4" G-2130 Shackle	25 tonne
9	4	Soft sling grommit nylon (12 ft)	25 tonne



4310 FM 2218
Richmond, TX 77469
ph. 281-232-9477
fx. 281-232-9407

NOTICE OF CONFIDENTIALITY

THIS DOCUMENT AND THE INFORMATION CONTAINED WITHIN COMPRISE PROPRIETARY INFORMATION OWNED SOLELY BY EDM. THIS DOCUMENT IS PROVIDED SUBJECT TO THE PROVISION THAT THE INFORMATION HEREIN WILL NOT BE DISCLOSED OR REPRODUCED UNLESS SPECIFICALLY AUTHORIZED IN WRITING BY EDM. NO WILL BE USED IN ANY WAY DETRIMENTAL TO OR IN COMPETITION WITH INTERESTS OF EDM. THIS DOCUMENT, REPRODUCTIONS PREVIOUSLY AUTHORIZED IN WRITING AND ASSOCIATED INFORMATION SHALL BE RETURNED WHEN THEY HAVE SERVED THEIR INTENDED PURPOSES, OR ON DEMAND.

DRAWN
B. Janak

CHECKED

QA

APPROVED

DATE
6/29/2009

Spreader Bar Rigging Arrangement

SCALE
1" = 20'

DWG NO.
DCL-RM-200-DWG-ST-1050-05

REV
0

MULTI-PART BRAIDED SLINGS

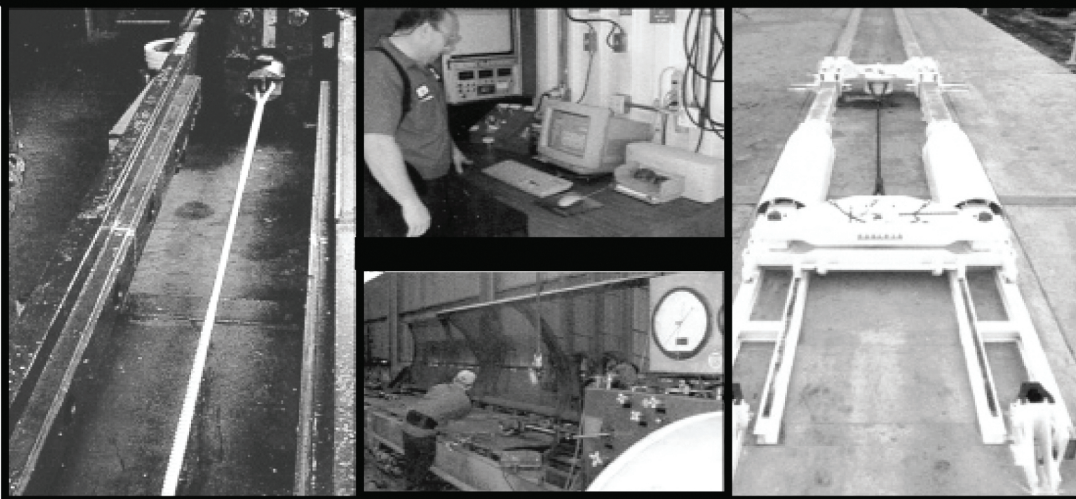


ISO Certified



LOAD TESTING SERVICES (ASTM-4, ABS, DNV)

- 1 x 3 million lbs test bed
- 3 x 500,000 lbs test beds



500,000 lbs PORTABLE TEST UNIT



CERTIFIED WIRE ROPE & SLING INSPECTION



Crushing.



Improper handling.



Undersize sheave grooves.



Lack of lubrication.

RENTAL INVENTORY

- Synthetic Slings
- Wire Rope Slings
- Braided Wire Rope Slings & Grommets
- Spreader Bars
- Shackles
- Anchor Chain & Fittings
- Pneumatic & Foam Filled Fenders
- Anchors
- Buoys

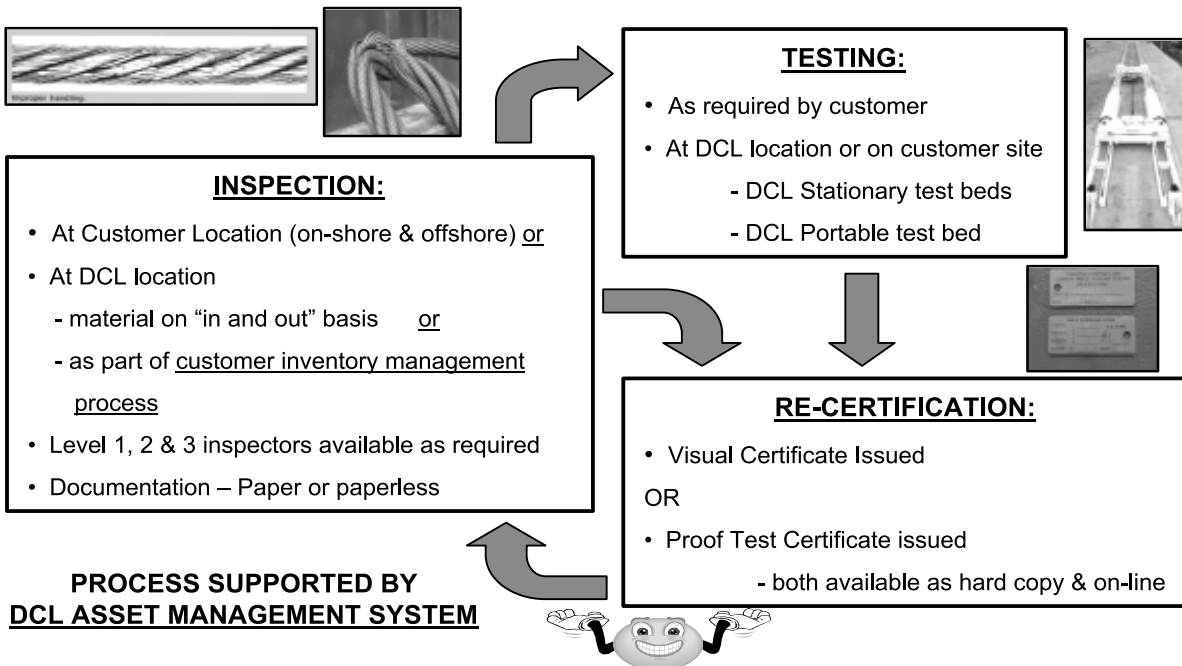


PORTABLE TESTING

- Portable Load Testing of Baskets, Skids, Tanks, Tool Boxes, Tugger Units
- NDT Testing performed on welds after Load Testing
- Units can test any size or configuration
- Certificates of Load Test and NDT are provided
- Properly applies force to the lifting points and floor as engineered
- Methods of testing approved by all major Oilfield Companies

ISO Certified

TESTING SERVICES Inspection - Testing - Recertification



ASSET MANAGEMENT SYSTEM

ASSET TRACKING SYSTEM

DCL has partnered with INFOCHIP to deliver an innovative solution that streamlines the Inspection, Testing and Certification process.

- Inventory status available on-line 24/7
- Real-Time on-line reporting & tracking of product
- Product location tracked while at DCL and at Customer locations
- Serial number or Radio Freq. (RFID chip tracking) available
- DCL can store, manage & deliver customer inventory

SOLUTION PROVIDER FOR:



DOCUMENT CONTROL SYSTEM

On-Line certificates and documentation available 24/7

- Search by Certificate Number
- Search by Date Range
- Data is Password Protected

<u>Cert Number</u>	<u>Description</u>	<u>Date</u>	<u>View Cert</u>
227271-1-	1/2" X 6' 7X7X7 GA CABLE LAID IMP. THIMBLE & THIMBLE SLING W/2T EYE HK. W/LATCH ON EACH END. DCL TYPE SEHST-SEHST	2009-05-25	View Cert
310693-1-	3/4" X 15' 6X19 IWRC EIP D/G RR IMP TWO LEG BRIDLE SLING LOWERY TYPE 2-OSL-ST-ST	2006-12-12	View Cert

INFO CHIP (RFID)

DESKTOP & TESTBENCH

IC Desktop is a desktop software program used for item creation, certification testing and inspections. Items can be tracked at the desktop using RFID chips or serial number entry.

IC Desktop digitally stores detailed information including item attributes, test data, forms, pictures, material certs, repair information, etc. Thousands of item-configuration options are pre-populated and easily tailored by your organization for any item type or brand (including Crosby). Pre-fill templates and drop-down menus speed data entry.

IC TestBench is utilized by assembly and testing shops to minimize redundant data entry, saving time and avoiding errors. IC TestBench integrates directly with your current digital testing hardware (including Roberts, Chant, and others). It enables the creation of digital test certs, and imports item details entered in IC Desktop (location, due date, load limit, description, length, size, etc.). The compiled record creates a complete digital certification that is stored online for future reference.

The image displays two software interfaces: IC Desktop and IC TestBench.

IC Desktop Interface:

- Item Information:** Shows fields for ChipID (NOCHIPID), Visible Asset Number (ACME-009923), Last Asset Number used, and a button to Generate Unique Asset Number.
- Item Category:** Chain Slings.
- Create Item From Profile:** A dropdown menu showing various chain sling profiles (e.g., ADOS 3/4in G80 Chain Sling).
- Item Description:** A list of selected item details.
- Customer:** A dropdown menu for selecting a customer.
- Choose location:** A list of locations (e.g., Job Site 1, crane3, Crane 1, etc.).
- Item Attributes:** A table of attributes including Grade (80), Diameter (3/4in), Chain Sling Type (ADOS), Chain Component/Mfr (Acco), Chain Model (23-A), End 1 (Oblong Link), End 2 (Sling Hooks), # of Legs (2), Length (20'), WLL Vertical (0), WLL Choker (0), WLL Basket (0), WLL 60 Degrees (49000), WLL 45 Degrees (40000), and WLL 30 Degrees (26300).

IC TestBench Interface:

- Current Reading:** Peak Load: 12120, Current Load: 50.
- DO NOT EXCEED:** 12240 (Target Load: 12000).
- Test Status:** Test Stopped, Current COM Port: 1, Power Data: (0.00000, 0.00250, 0.0001, 0.0001, 1).
- Time above Target Load:** 6.38.
- Test Information:** Test Running, Test Paused, Test Stopped, Communication Problem.
- Test Data:** A graph showing Load vs. Time (seconds) with a peak load of 12240.
- Test Parameters:** Test Number: ABB27360-7A57-4B4-901C-A42EBB9696DE, Date: 2009-01-22 13:56:00.
- Test Method:** 1 xWLL.
- Target Load:** 12000.
- Allowable Overage:** 2%.
- Max Load:** 12240 LBS.
- Start/Stop Test:** Buttons for Start Now Test, Stop Test, and a button to Save and Close.

Digital Certificate of Proof:

- Item Description:** ADOS 3/4" G80 Chain Sling.
- Asset #:** ACME-5235.
- Chip ID:** 122-587892-129435.
- Owner:** KEO Construction.
- Test Information:** Test #, Test Location, Test Method, Test Performed by.
- Test Data:** A graph showing Load vs. Time (seconds) with a peak load of 12240.
- Test Parameters:** Test Number: ABB27360-7A57-4B4-901C-A42EBB9696DE, Date: 2009-01-22 13:56:00.
- Test Method:** 1 xWLL.
- Target Load:** 12000.
- Allowable Overage:** 2%.
- Max Load:** 12240 LBS.
- Start/Stop Test:** Buttons for Start Now Test, Stop Test, and a button to Save and Close.

INFO CHIP (RFID)

ONLINE

The IC Online manager is a web application and database system that compiles item records and includes various reports and analytical functions. The IC Desktop and IC Mobile handheld applications interact with the item record for identification, inspection, and locating purposes. After uploading the gathered data to IC Online, various dashboards and reports immediately notify you as to which items are due for inspection and exactly where they are located – these reports can be emailed at any time. You and your extended team can also retrieve historical inspection or certification information with printable reports. Reference any item documents, including inspection forms, test certs, material certs, photos, etc.

Completed Operations

Search Criteria:

Select From Date: 2006-07-19 Select To Date: 2007-02-16 Op. Type: Inspection Employee: (Select Employee) [Search](#)

Item Desc: CHAIN CFK9877 Location: (Select Location) Work Order Generated: (Select Status) Work Order Closed: (Select Status) [Reset](#)

* Green rows have Closed Work Orders * Red rows have Open Work Orders

	Date (y/m/d)	Type	Operation Description	Performed By	It
Select	2006-12-11 11:02:28	Inspection	Daily Inspection	Tom Bamford	CH
Select	2006-11-28 11:47:31	Certification	Chain Assembly Certification	Tom Bamford	CH
Select	2006-11-28 11:42:09	Certification	Chain Assembly Certification	Tom Bamford	CH
Select	2006-11-28 10:41:42	Inspection	Weekly Chain Assembly Inspection	Tom Bamford	CH
Select	2006-11-28 10:29:35	Certification	Chain Assembly Certification	Tom Bamford	CH

Latest Item Information

LatestInfo	History	ChipID	Customer Name	Make	Model	Location	Next Test Date
LatestInfo	History	70490772	Demo Customer	GOODYEAR	GOODYEAR	TRUCK44	2006-12-21
LatestInfo	History	7049050F	Demo Customer	GOODYEAR	PALADIN	UNSTOCK	2001-07-02
LatestInfo	History	7049051A	Demo Customer	GOODYEAR	PALADIN	TRUCK 77	2002-10-22
LatestInfo	History	70490536	Demo Customer	GOODYEAR	PALADIN	STOCK	2003-09-01
LatestInfo	History	7049088D	Demo Customer	GOODYEAR	PALADIN	STOCK	2004-01-01
LatestInfo	History	70490DB8	Demo Customer	MAKE	MODEL	STOCK	2004-10-21
LatestInfo	History	70490F6E	Demo Customer	MAKE	MODEL	STOCK	2004-10-26
LatestInfo	History	7049FB1A	Demo Customer	MAKE	MODEL	STOCK	2004-10-31
LatestInfo	History	7049F77B	Demo Customer	GOODYEAR	PALADIN	STOCK	2004-11-11
LatestInfo	History	70490870	Demo Customer	GOODYEAR	PALADIN	STOCK	2005-06-01
LatestInfo	History	70043728	Demo Customer	SUPERIOR	DMX	TRUCK 47	2005-07-31
LatestInfo	History	7049F9F6	Demo Customer	MAKE	MODEL	STOCK	2005-10-01
LatestInfo	History	7049FD40	Demo Customer	PR1	MODEL		
LatestInfo	History	70490533	Demo Customer	MAKE	MODEL		
LatestInfo	History	7049F6A2	Demo Customer	MUNROE			
LatestInfo	History	7049FA04	Demo Customer	GATES	DUN		
LatestInfo	History	7049FA27	Demo Customer	MAKE	MODEL		
LatestInfo	History	70490600	Demo Customer	MAKE	MODEL		
LatestInfo	History	704909FB	Demo Customer	GIRL/MAKE	GIRL/MODEL	LOCATION2	2005-10-06
LatestInfo	History	70490A5E	Demo Customer	GOODYEAR	PALADIN	LOCATION1	2005-10-07
LatestInfo	History	70490A0D	Demo Customer	BOSTON	FIVE	TRUCK	2005-10-20

[Email due-date schedule report to end-users](#)

Item Details for: CHAIN CFK9877

Chip ID: 70090083
Asset Number: 3254
Owner: Demo Distributor
Operation Type: Certification
Location Description: Demo Distributor (Root Loc.)

Item Attribute	Data
Work Order #	2342
Customer #	4
Customer Name	ABC
Closed Date	2006-11-28 10:29:00-07:00
Item Code	20
Item Description	Chain cfk9877
Product Class	44

Operation Details for: Chain Assembly Certification

Performed By: Tom Bamford
Completed Date: 2006-11-28 10:29:35
Work Order Created: No

Description	Result Data
Inspection Criteria	
Master link condition	Very Good
Hoist capacity marking	35345
UNIS secure	TRUE
Test Criteria	
Pull Test Pressure	
Chain assembly passes certification?	No

☒ Show ALL results.
 ☐ Show only TRUE results.
 ☐ Show only FALSE results.

[Click here to Print/View a Full Size Test Chart Image](#)

[Open Printable Report \(new window\)](#)

Field inspection details with work order comments

Certs, pics, other attachments

Test Chart Thumbnail

[Click here to Print/View a Full Size Test Chart Image](#)

[Open Printable Report \(new window\)](#)

INFO CHIP (RFID)

HANDHELD READERS

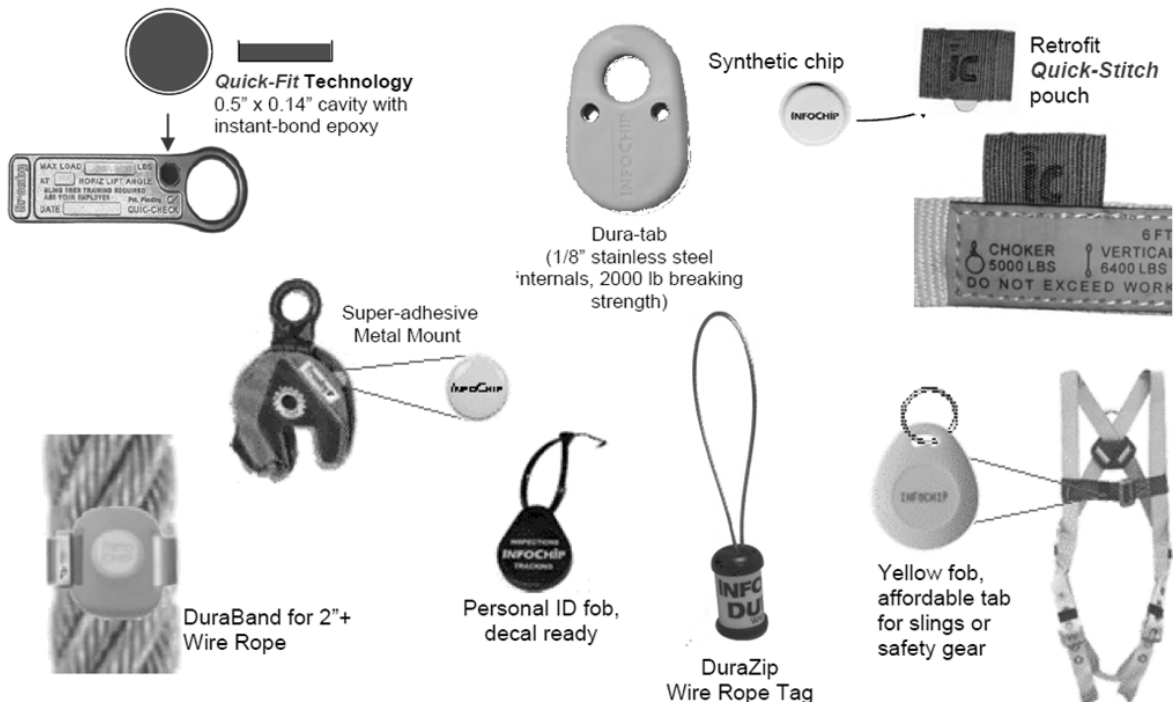
The InfoChip Handheld is a Pocket PC device (tablet compatible) with a built-in chip reader/writer which is capable of scanning High Frequency 13.56 MHz RFID chips (ISO15693). The handheld hosts the *IC Mobile* application and a resident asset database is referenced when scanning an RFID chip or keying in the asset serial number as a backup. It features an easy-to-use visual interface for reading information and for uploading inspection and inventory updates to *IC Online*. Various units are available including wireless, basic, bar code, camera, rugged and intrinsically safe. The readers are InfoChip tuned to read high-frequency chips embedded in metal environments. We are the only vendor to prove/guarantee the read/write of InfoChip authorized chips in all metal environments.



Built in camera, bar code, GPS and Intrinsically Safe models

CHIP

Individual RFID chips are used to identify asset information detail. Chips are available individually or in a housed urethane packaging. InfoChip has engineered a unique design enabling low-cost high frequency chips to function on or in-metal environments and have been durability tested by customers with a variety of stress tests (-40° to 400 °F, 12,000' below sea level). InfoChip offers **Quick-Fit** technology enabling rapid installation of chips in metal with the smallest hole and highest performance. **Quick-Stitch** technology offers the same value for synthetic attachments.



ISO Certified

PORTABLE SPOOLING SERVICES

- ✓ Two (2) portable winding machines.
- ✓ Capabilities up to 150,000#
(e.g. 3 ½" x 6000' of wire)
- ✓ Experienced & certified rigging crews
(on-shore & off-shore)



FENDER REPAIR

