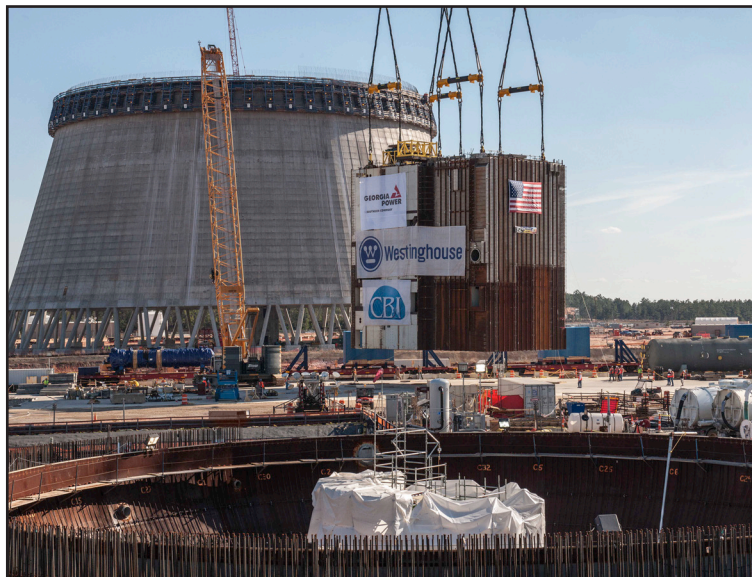


SLINGMAX[®] WIRE ROPE SLINGS

WIRE ROPE SLINGS



QUICK REFERENCE CHART

Most Popular SLINGMAX® Heavy-Lift Wire Rope Slings

	Parts of wire rope in body	D/d Body*	D/d Eye*	Termination of each Eye	Minimum Length	Features
Tri-Flex® sling	3	5/1	1.5/1	1 Ferrule	6' for 7/8" component wire*	Good replacement for single-strand wire rope slings
Gator-Laid® sling	9	5/1	1/1	3 Ferrules	6' for 3/4" component wire*	80% efficiency; parallel-laid eyes
Gator-Flex® grommet	9	5/1	N/A	Hand tuck	5' for 1/4" component wire*	Endless

*Ratio based on finished body diameter

*Ratio based on finished body diameter

*Minimum length increases as component wire size increases

Inspection of Slingmax® Wire Rope Slings

1. Follow general criteria in ASME/ANSI B30.9 Chapter 9-2 "Wire Rope Slings – Selection, Use and Maintenance".
2. Retirement Criteria: For Tri-Flex® slings of less than 9 parts, 20 broken wires per lay length means that the sling should be removed from service. For slings of 9 parts or more, 40 broken wires per lay length means that the sling should be removed from service.

ADVANTAGES:

Flexibility

Low D/d ratios

Fabrication to tight tolerance

Meets conditions specified by the Wire Rope Technical Board Sling Manual