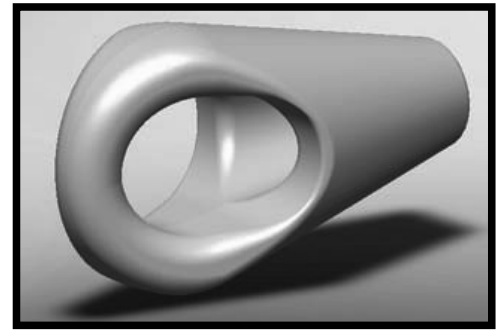


The *WORKHORSE* “PEE WEE®” Mooring Sockets



<u>Specifications, Quality Control and Testing</u>	<u>ORIGINAL LBNO “PEE® WEE”</u>	<u>WORKHORSE LBNO “PEE® WEE”</u>
1) A148 115-95 Alloy Steel - High tensile strength for tough material - 120,000 PSI UTS	YES	YES
2) Fitted for “RFID” chips as required.	YES	YES
3) Serialization of each socket traceable back to individual and unique heat.	YES	YES
4) Test bar analysis of chemistry and physical properties against ASTM A148 Grade 115-95 Alloy Steel Specifications - Traceable. ➤ Test bar is poured from each heat and is cast and heat treated with the sockets representing each unique pour to confirm quality of heat treatment.	YES	YES
5) 100% Visual Inspection for irregularities of each socket to MSS – SP 55 Standard - Traceable.	YES	YES
6) Magnetic Particle Inspection (MPI) testing of each socket - Traceable. ➤ Specification: No relevant indications; Level 3 for surface quality and maximum linear indication 1/8”.	YES	YES
7) Pulled two times SWL of highest grade corresponding wire size - Traceable.	YES	YES
8) Heat Test Log Analysis - Traceable. ➤ Square test piece is cast and heat treated with each socket. Test Square is then broken off from socket to analyze metal grain structure and to verify proper heat treatment of socket. Analysis and Test Coupons are traceable.		YES
9) Charpy Impact Testing - Traceable. ➤ 2” Test Bar (Keel Block) per heat is used to test metal at low temperature (-40 degree F). Analysis and Test Coupons are traceable (100% BHN).		YES
10) Equivalent Round Testing - Traceable. ➤ Larger sample Test Bar is poured from each casting and heat treated with the sockets representing each unique pour to confirm quality of heat treatment against ASTM specifications.		YES
11) Weld Mapping - Traceable. ➤ Any welding performed on socket at manufacturing is recorded by serial number and stored. Welding is sometimes used to correct any imperfections found in MPI and visual inspection processes.		YES
12) NDT X-Ray 1 out of every 25 sockets - Traceable.		YES
13) Proof Testing of Sockets - Traceable. ➤ 2 Sockets per each 50 unit lot tested to MBL/Break (i.e. 100 unit lot has 4 sockets tested to break).		YES